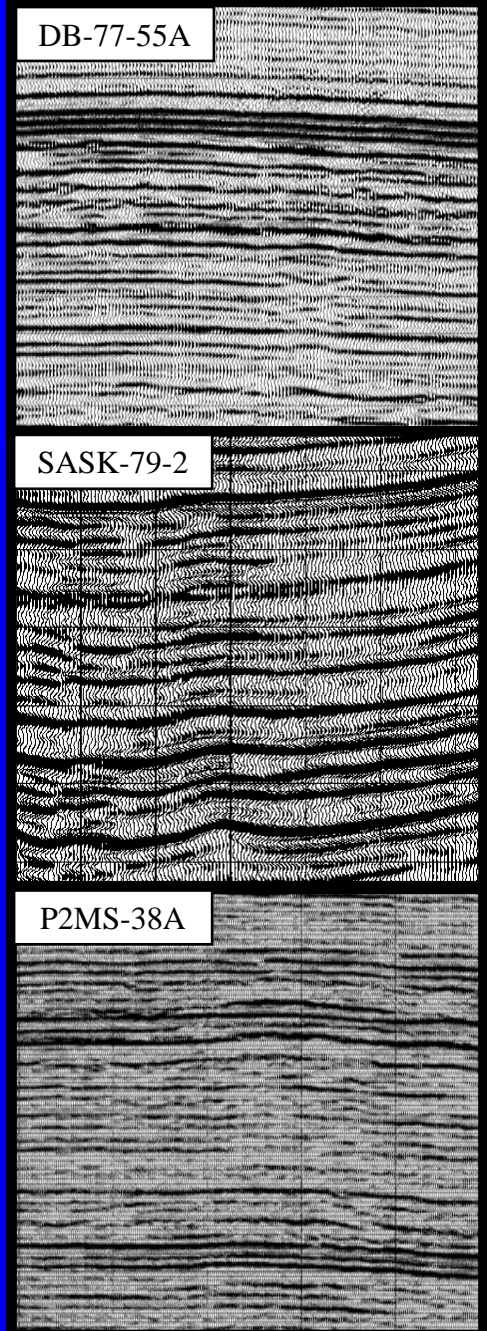
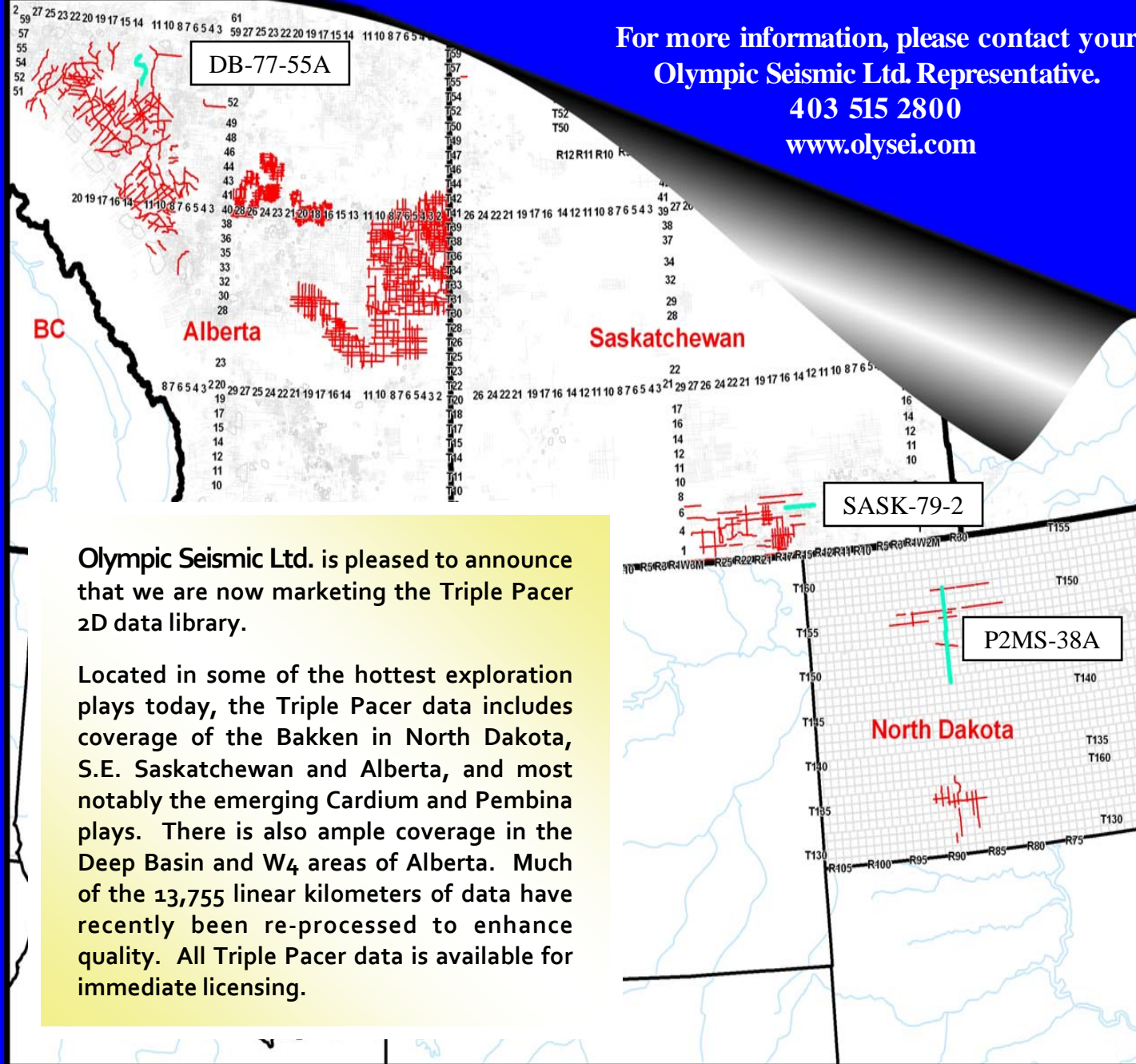


RECENTLY REPROCESSED TRIPLE PACER 2D DATA NOW AVAILABLE AT OLYMPIC

For more information, please contact your
Olympic Seismic Ltd. Representative.
403 515 2800
www.olysei.com



Olympic Seismic Ltd. is pleased to announce that we are now marketing the Triple Pacer 2D data library.

Located in some of the hottest exploration plays today, the Triple Pacer data includes coverage of the Bakken in North Dakota, S.E. Saskatchewan and Alberta, and most notably the emerging Cardium and Pembina plays. There is also ample coverage in the Deep Basin and W₄ areas of Alberta. Much of the 13,755 linear kilometers of data have recently been re-processed to enhance quality. All Triple Pacer data is available for immediate licensing.