




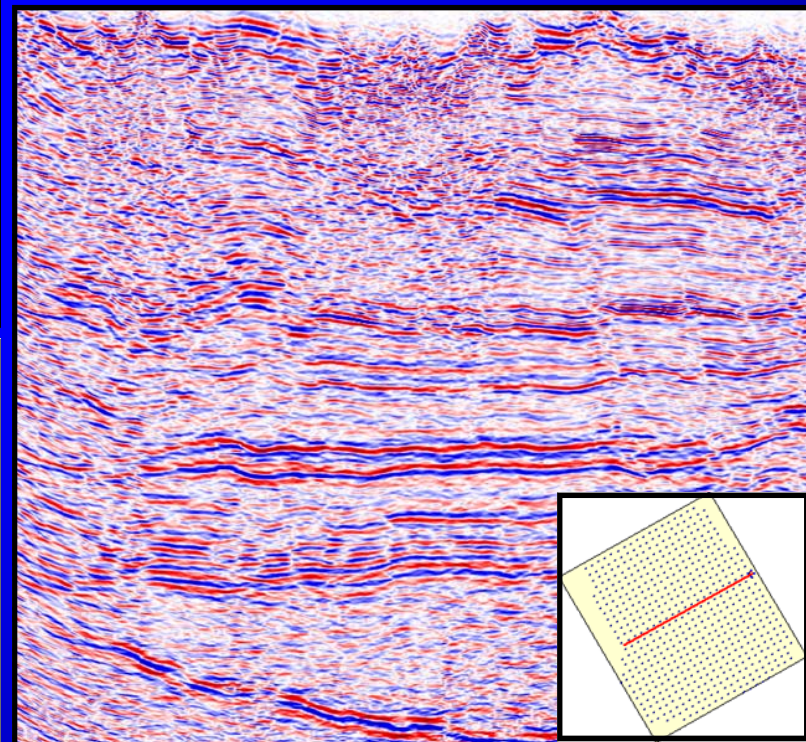


Contact your OSL representative for more information:

- 403-515-2800
- www.olysei.com

-  Recently reprocessed Cameron River 3D - 504 km²
-  Existing industry 3D data
-  Well activity within the last year
-  Oct 21 2009 land sale
-  OSL 100% owned or controlled 2D data

5D REVIVE INTERPOLATED PSTM CROSSLINE



DELIVERABLES

1. Filtered structure stack
2. Unfiltered structure stack
3. Filtered post stack migration
4. Unfiltered post stack migration
5. Filtered 5D REVIVE interpolated pre stack time migration
6. Unfiltered 5D REVIVE interpolated pre stack time migration
7. Filtered pre stack time migration
8. Unfiltered pre stack time migration